



**Weems & Plath®**

*Manufacturer of Fine Nautical Instruments*

# *The Weems and Plath® Story*

*80 years of Innovation and Quality*

*In May of 1919, eight years before Lindbergh's famous solo flight, three small planes set out from Newfoundland headed for London in an attempt to make the first trans-Atlantic flight. Only one of them made it. Twenty-five hundred feet below on board a station tracking ship, a young navigator, Lt. Cdr. Philip Van Horn Weems, U.S. Navy, gazed up and thought there must be a safer and simpler way than using a small armada of ships as beacons for the flight.*

*For centuries, man had relied on the heavens, on the circling planets and the constant horizon to guide him in his travels. An accurate clock, a compass, a sextant and charts were the necessary tools for plotting a course, but these required time for computations and a place to spread out and study the charts. The timeworn system of celestial navigation was ill suited to the cockpit, but the airplane was here to stay. Lt. Cdr.*

*Weems, a brilliant, inventive and determined young man knew as he tracked that first flight that navigation was his destiny, and he went on to revolutionize the field with his ideas, writings and inventions.*

*The challenge he undertook was complex and involved the invention of new methods and new tools. It required a horizon system independent of the sea horizon that was often not visible from the cockpit of a plane. Weems worked for years to develop a new kind of sextant and to find someone to manufacture it. When an accurate timepiece was needed, Weems invented the Second Setting Watch with its inner rotating dial. He produced the famous Weems Plotter, the more precise and easier to use plotting tool, which is still one of our most popular plotters.*

*All his life, Weems continued to improve the instruments and broaden the applications of his methods until they came to include radio astronomy, polar exploration and even space navigation. He published numerous articles and taught navigation at the Naval Academy in the 1920's. He went on to establish his own school in Annapolis to teach The Weems System of Navigation. Charles Lindbergh studied with Weems before attempting his trans-Atlantic flight. Admiral Byrd, a classmate of Weems at the Naval Academy, came to Weems for instruction before setting out for the North Pole, as did many others.*

*A century earlier, Carl Plath's company in Hamburg, Germany - C. Plath, had been manufacturing the finest commercial sextants and magnetic compasses available. C. Plath developed the first gyrocompass installed on a commercial vessel in 1913. Weems' school for navigation had become the purveyor of Weems' instruments. It was a natural development for Weems' company to become the North American source for C. Plath's fine instruments; hence the alliance of two distinguished names - Weems and Plath. The exceptional workmanship that both Philip Van Horn Weems and Carl Plath required in developing the manufacturing of precision navigation tools remains at the heart of all our products today.*

*Today, Weems & Plath is still located in the Chesapeake Bay town of Annapolis where it began so many years ago. We are committed to supplying the world with the finest nautical products available while maintaining the high standards of service that have distinguished Weems & Plath from its inception.*



Capt. Philip Van Horn Weems



Carl Plath

# The Weems Navigator Watch

*Commemorating 80 years since Weems invented the famous Second Setting Watch.*



2006B



Night View



2006W

*Styled after the famous Weems Second Setting Watch designed by Captain Philip Van Horn Weems in 1928 and used by famous aviators including Charles Lindbergh and the U.S. Air Force during World War II. The Swiss-made watch has a rotating bezel which can be set as a visual reminder to monitor elapsed time. The dial and hands are fitted with gaseous tritium light source (GTLS), a technology formerly only found in professional dive watches.*



Weems with Second Setting Watch circa 1928.

## Features:

- Accurate Swiss-made quartz movement.
- Gaseous Tritium Light Source (GTLS) illuminates hour markers and hour/minute/second hands.
- Water resistant to a depth of 330' (10 ATM).
- Uni-directional bezel rotates to align guide marker with second or minute hand to monitor elapsed time.
- Date window showing day of the month.
- Available with black or white dial.
- Two watch bands - Water resistant black Italian calfskin - Waterproof black rubber sport band.
- Mineral glass crystal.
- Warranty - 2 years.
- Each watch is individually numbered.
- Limited production, available through selected distributors.
- Black leatherette storage case.
- Strap changing tool included.
- Case size: 1-3/5" diameter (42mm).
- Weight: 0.6 lb. (272 g).

2006B Weems Navigator Watch (Black Dial)  
2006W Weems Navigator Watch (White Dial)





# FINE NAUTICAL INSTRUMENTS CATALOG

## TABLE OF CONTENTS

WEEMS NAVIGATOR WATCH . . . . .	1
CLOCKS AND BAROMETERS . . . . .	4-19
BAROGRAPHS . . . . .	19
CHART WEIGHTS . . . . .	20-21
BELLS . . . . .	22
STORMGLASS . . . . .	23
GALILEO GLASS . . . . .	23
BRASS POLISH . . . . .	24
LAMPS AND ACCESSORIES . . . . .	24-29
LOG BOOKS AND COVERS . . . . .	30
BINOCULARS . . . . .	31
CHART LIGHTS . . . . .	32
SEXTANTS . . . . .	33
CHILDREN'S BOOKS . . . . .	33



Please refer to the Weems & Plath® Navigation Catalog to see the full line of navigation tools and other accessories that are not included in this catalog.



*Dear Customer,*  
*For over 80 years, we have taken great pride in building each of our products with the goal of providing the highest quality possible. Every step of this building process, from development to production, is taken with meticulous care. Our products are meant to be enjoyed for a lifetime, and it is with confidence we offer a limited lifetime warranty on most. We also strive to provide exceptional service and encourage you to let us know how we are doing.*

*Always a hand's width of water under your keel,*  
*Peter Trogdon*  
*President*

# CUSTOMIZING FOR CORPORATE & PERSONAL GIFTS

*We offer a wide range of customizing services in-house; featuring etching, engraving and printing of names and corporate logos on badges, metal, plastic, glass and much more. The price of each job will vary based on your specific requirements. Therefore, we will need to quote each job individually. Please see our custom products specification sheet, contact us at 1-800-638-0428 or email [sales@weems-plath.com](mailto:sales@weems-plath.com).*





# ENDURANCE™ COLLECTION



85: Dial: 3-3/8" (85 mm). Base: 4-1/8" (105 mm). Depth: 1-1/2" (38 mm). Wt: .65 lbs (295 g).

125: Dial: 4-7/8" (125 mm). Base: 6" (152 mm). Depth: 1-5/8" (41 mm). Wt: 1.3 lbs (589 g).

145: Dial: 5-3/4" (145 mm). Base: 7-1/8" (181 mm). Depth: 1-7/8" (48 mm). Wt: 1.45 lbs (658 g).

*Revolutionary new indoor/outdoor instrument collection with our largest selection of sizes, finishes and styles.*

- Patented Slide 'n Lock Mounting System, no visible mounting screws, easy removal for adjustments & battery replacement.
- Maintenance-free, ultra-hard finish guaranteed to NEVER tarnish.
- Available in Brass, Chrome and Black Pearl finish.
- Weatherproof construction for outdoor use.
- Lifetime warranty on finish and movement.
- Beveled glass.



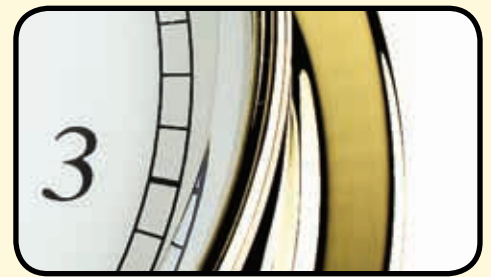
	Clock	Barometer	Comfortmeter	Time & Tide	Clinometer	Barometer w/Comfortmeter	Radio Control Clock	Day Clock
Brass								
085	230500	230700	230900	N/A	234000	N/A	N/A	N/A
125	530500	530700	530900	530300	534000	N/A	N/A	N/A
145	N/A	N/A	N/A	N/A	N/A	631400	632000	636000
Chrome								
085	320500	320700	320900	N/A	324000	N/A	N/A	N/A
125	540500	540700	540900	540300	544000	N/A	N/A	N/A
145	N/A	N/A	N/A	N/A	N/A	641400	642000	646000
Black Pearl								
085	490500	490700	490900	N/A	494000	N/A	N/A	N/A
125	590500	590700	590900	590300	594000	N/A	N/A	N/A



**Weatherproof construction with O-ring seated behind beveled glass is designed for outdoor use.**



**Patented Weems Slide 'n Lock™ Mounting System locks instrument in place with no visible mounting screws and allows easy removal for adjustments, battery changes, storage or security.**



**New maintenance-free ultra-hard finish that will NEVER tarnish or scratch.**

**Lifetime warranty on finish and movement.**

### ***ENDURANCE WOOD BASES***

- Solid North American hardwood with rich mahogany finish.
- Weems Slide 'n Lock™ mounting plate comes attached to inside back of base, ready for simple installation of the instrument of your choice.

#### **Single Base 85S or 125S**

- Fits one Endurance 085 (85S) or 125 (125S) instrument.
- Dims: 85S - 7-3/4" x 2-3/8" x 6" (197 x 60 x 152 mm).
- 125S - 10-3/8" x 2-3/4" x 7-3/8" (264 x 70 x 187 mm).
- Wt: 85S - 1 lb. (454 g).
- 125S - 1.7 lbs. (771 g).

#### **Double Base**

**85D**

- Fits 2 Endurance 085 instruments.
- Dims: 12-3/8" x 2-3/8" x 6" (314 x 60 x 152 mm).
- Wt: 1.55 lbs. (703 g).

#### **Triple Base**

**85T**

- Fits 3 Endurance 085 instruments.
- Dims: 16-1/2" x 2-3/8" x 6" (419 x 60 x 152 mm).
- Wt: 2.35 lbs. (1066 g).





## TRADITIONAL 8-DAY WIND SHIP'S BELL CLOCKS

*For many years, Weems & Plath® has been proud to build clocks using some of the finest movements in the world. Our 8-day wind ship's bell clocks are the most traditional clocks we build. The key-wound movement found in our Anniversary™, Atlantis™ and Martinique™ Collections is the Hermle 8-day ship's bell. This 11-jewel movement is handcrafted in the Black Forest region of Germany, home to some of the finest clockmakers in the world. Because of our confidence in the quality of the movements made there, Weems & Plath® offers an unmatched lifetime warranty on all instruments we build using this movement.*



### 8-Day Wind Ship's Bell Clock

Traditional key wound, 11-jewel movement with bell silencer.

#100275 Anniversary 8-Day Wind Ship's Bell Clock

#200200 Atlantis 8-Day Wind Ship's Bell Clock (shown)

#190200 Martinique 8-Day Wind Ship's Bell Clock

## ORIGIN OF THE SHIP'S BELL CLOCK

*In addition to German precision, Weems & Plath® clocks are also steeped in American Heritage because of the chime used, which is referred to as a "Ship's Bell". This system of chimes evolved from a crude sand clock dating back to the time of Columbus. This primitive clock was called a sand or sandglass clock and was an essential device for marking the time at sea.*

*Records of epic voyages tell us about this device and how the helmsman used it to measure time in half-hour increments. Watches or shifts were organized into increments of four hours; a custom that is still widely used. With the sandglass at his side, the helmsman would signal the passing of half-hour increments starting with the strike of one bell at the end of the first half hour, two at the second and so on until reaching eight bells, which signaled the end of the watch.*

*The tradition of the sand clock continued for hundreds of years and was replaced only by the development of the mechanical clock. But, it was not until the 19th century that the first mechanical ship's bell clock was produced in America. The principle of this American innovation remains almost unchanged to this day.*

### The Ship's Bell Code

4:00	8:00	12:00	=	8 Bells
4:30	8:30	12:30	=	1 Bell
5:00	9:00	1:00	=	2 Bells
5:30	9:30	1:30	=	3 Bells
6:00	10:00	2:00	=	4 Bells
6:30	10:30	2:30	=	5 Bells
7:00	11:00	3:00	=	6 Bells
7:30	11:30	3:30	=	7 Bells
8:00	12:00	4:00	=	8 Bells



# ANNIVERSARY™ COLLECTION

Dial: 5-1/4" (133 mm). Base: 7" (178 mm). Depth: 3-1/2" (89 mm).

*Our elegant Anniversary Collection of ship's clocks and barometers was introduced to commemorate 75 years of the rich heritage of Weems & Plath, which is closely linked to our founder, Captain Philip Van Horn Weems, who strove to perfect the field of navigation.*

- Created from solid, forged brass that is hand polished and lacquered.
- Uses the finest German movements, dials, hands and components available in the world.
- The distinctive dial of each instrument is intricately etched to create a subtle but rich pattern.
- Each instrument is labeled with a unique serial number and is provided with complete instructions and mounting hardware.
- All instruments carry a limited lifetime warranty.



## 8-Day Wind Ship's Bell Clock 🚩

- Traditional ship's 8-bell cycle, ringing every half hour.
- Handcrafted German Hermle 11-jewel, key wound movement with bell silencer.
- Wt. 8lbs 2 oz. (3685 g).

**100275 Anniversary 8-Day Wind Ship's Bell Clock**

**KEY Replacement Key for 8-Day Wind Clock**

## Anniversary Wood Base

- Mahogany finish base with round brass feet.
- Special design feature allows the ship's bell chime to resonate from the clock so the sound is heard clearly.
- Keyhole in rear provides convenient storage for 8-day wind key.
- Dims: 14¼" x 4½" x 10½" (362 x 102 x 254 mm).
- Wt: 5 lbs. 2 oz. (2325 g).

**107B Anniversary Wood Base**



## Barometer

- Highly reliable and accurate double diaphragm German aneroid movement.
- Displays both of the barometric scales; inches of mercury and millibars.
- Movement is temperature compensated and calibrated for altitudes up to 3500 feet above sea level.
- Wt: 7 lbs 2.5 oz. (3246 g).

**100775 Anniversary Barometer**



## Quartz Ship's Bell Clock 🚩

- Traditional ship's 8-bell cycle, ringing every half hour.
- Our best German quartz ship's bell movement with bell silencer switch.
- AA battery included.
- Wt. 6 lbs 14 oz. (3118 g).

**100175 Anniversary Quartz Ship's Bell Clock**

# ATLANTIS™ COLLECTION

Dial: 4" (102 mm). Base: 5-1/2" (140 mm). Depth: 2-7/8" (73 mm).

*Traditional forged brass ship's instruments, also available chrome-plated.*

- Created from solid, forged brass that is hand polished and flawlessly lacquered.
- Screw bezel adds the classic nautical look and allows easy access to components for adjustment.
- Provided with complete instructions and mounting hardware.
- All instruments carry a limited lifetime warranty.

200101 ▲  
200501  
with 101B

201000  
with 135

200300  
with 135

200200 ▲  
with 100B

200700  
with 102B

200100 ▲  
with 102B



# CHROME ATLANTIS™ COLLECTION

Dial: 4" (102 mm). Base: 5-1/2" (140 mm). Depth: 2-7/8" (73 mm).



## Quartz Ship's Bell Clock 🚢

- Traditional ship's 8-bell cycle, ringing every half hour.
- Bell silencer switch.
- AA battery included.
- Wt. 3 lbs. 7 oz. (1559 g).

**200100 Atlantis Quartz Ship's Bell Clock**

**200101 Atlantis Premiere Quartz Ship's Bell Clock, Black Dial**

**220100 Chrome Atlantis Quartz Ship's Bell Clock**

## 8-Day Wind Ship's Bell Clock 🚢

- Traditional key wound, 11-jewel movement with bell silencer.
- Wt. 3 lbs. 9 oz. (1616 g).

**200200 Atlantis 8-Day Wind Ship's Bell Clock**

**KEY Replacement Key for 8-Day Wind Clock**

## Time & Tide Clock

- Combination quartz and tide clock movement which averages the lunar tide cycle.
  - Tide sector is calibrated for the east coast of the United States. (Note: The clock will work for other tidal bodies of water but will need to be re-set more frequently).
  - AA battery included.
  - Wt. 3 lbs. 3 oz. (1446 g).
- 200300 Atlantis Time & Tide Clock**  
**220300 Chrome Atlantis Time & Tide Clock**

## Quartz Clock

- Precision German movement.
- AA battery included.
- Wt. 3 lbs. 6 oz. (1531 g).

**200500 Atlantis Quartz Clock**

**200501 Atlantis Premiere Quartz Clock, Black Dial**

**220500 Chrome Atlantis Quartz Clock**

## Barometer

- Fully adjustable, temperature compensated aneroid movement with inch and millibar scales.
- Calibrated for altitudes to 3,500' above sea level.
- Movements for altitudes from 3,500' to 7,000' are available by special order for an additional charge.
- Wt. 3 lbs. 3 oz. (1446 g).

**200700 Atlantis Barometer**

**200701 Atlantis Premiere Barometer, Black Dial**

**220700 Chrome Atlantis Barometer**

## Barometer/Thermometer

- Fully adjustable, temperature compensated aneroid barometer movement with inch and millibar scales.
- Calibrated for altitudes to 3,500' above sea level
- Movements for altitudes from 3,500' to 7,000' are available by special order for an additional charge.
- Thermometer has both °F and °C scales, with markings every 2° from 32° to 122°F.
- Wt. 3 lbs. 3 oz. (1446 g).

**201000 Atlantis Barometer/Thermometer**

**221000 Chrome Atlantis Barometer/Thermometer**

## Thermometer

- Dial-type thermometer has both °F and °C scales, with markings every 2° from -8° to 130°F.
- Pre-adjusted in temperature-controlled environment.
- Wt. 3 lbs. 3 oz. (1446 g).

**201200 Atlantis Thermometer (not shown)**

**221200 Chrome Atlantis Thermometer (not shown)**

## High Sensitivity Barometer

- Special patented double-capsule movement that is factory certified to be accurate to within 0.2% of real pressure.
- Scale range has changed from traditional scale of 27.5" to 31.5" Hg to expanded scale of 28.5" to 30.5" Hg. This exaggerates needle movement making a small change in pressure much more noticeable.
- Calibrated for altitudes to 1500' above sea level.
- Wt. 3 lbs. 3 oz. (1446 g).

**201800 Atlantis High Sensitivity Barometer**

**221800 Chrome Atlantis High Sensitivity Barometer**

## Single Mahogany Finish Base with Back Panel 100B

- Dims: 4" x 9-1/2" x 7-1/2" (102 x 241 x 191 mm).
- Wt. 2 lbs. (907 g).

## Single Mahogany Finish Base 101B

- Dims: 4" x 9-1/2" (102 x 241 mm).
- Wt. 1 lb. 5 oz. (596 g).

## Double Mahogany Finish Base 102B

- Dims: 4" x 18" (102 x 457 mm).
- Wt. 2 lbs. 13 oz. (1276 g).

## Mahogany Finish Book End 135

- Dims: 4" x 8-3/4" (102 x 222 mm).
- Wt. 1 lb. 14 oz. (850 g).
- Sold individually.

# MARTINIQUE™ COLLECTION

Dial: 4" (102 mm). Base: 5-1/2" (140 mm). Depth: 2-3/4" (70 mm).

## Classic porthole forged brass instruments.

- Front-opening hinged bezel case is constructed of solid, forged brass with a coat of lacquer to ensure a lasting shine.
- Provided with complete instructions and mounting hardware.
- All instruments carry a limited lifetime warranty.

190300  
with 135

191000  
with 135

190200  
with 100B

190700  
with 102B

190105  
190505  
with 101B

190100  
with 102B

## Quartz Ship's Bell Clock

- Traditional ship's 8-bell cycle, ringing every half hour.
- Bell silencer switch.
- AA battery included.
- Wt. 3 lbs. 10 oz. (1644 g).

190100 Martinique Quartz Ship's Bell Clock

190105 Martinique Flag Quartz Ship's Bell Clock, White Dial with Color Flags

## 8-Day Wind Ship's Bell Clock

- Traditional key wound, 11-jewel movement with bell silencer.
- Wt. 3 lbs. 9 oz. (1616 g).

190200 Martinique 8-Day Wind Ship's Bell Clock

KEY Replacement Key for 8-Day Wind Clock

## Time & Tide Clock

- Combination quartz and tide clock movement which averages the lunar tide cycle.
- Tide sector is calibrated for the east coast of the United States. (Note: The clock will work for other tidal bodies of water but will need to be re-set more frequently).
- AA battery included.
- Wt. 3 lbs. 3 oz. (1446 g).

190300 Martinique Time & Tide Clock

## Quartz Clock

- Precision German movement.
- AA battery included.
- Wt. 3 lbs. 6 oz. (1531 g).

190500 Martinique Quartz Clock

190505 Martinique Flag Quartz Clock, White Dial with Color Flags

## High Sensitivity Barometer

- Special patented double-capsule movement that is factory certified to be accurate to within 0.2% of real pressure.
- Scale range has changed from traditional scale of 27.5" to 31.5" Hg to expanded scale of 28.5" to 30.5" Hg. This exaggerates needle movement making a small change in pressure much more noticeable.
- Calibrated for altitudes to 1500' above sea level.
- Wt. 3 lbs. 3 oz. (1446 g).

191800 Martinique Hi-Sensitivity Barometer (not shown)

## Barometer

- Fully adjustable, temperature compensated aneroid movement with inch and millibar scales.
- Calibrated for altitudes to 3,500' above sea level.
- Movements for altitudes from 3,500' to 7,000' are available by special order for an additional charge.
- Wt. 3 lbs. 3 oz. (1446 g).

190700 Martinique Barometer

## Thermometer

- Dial-type thermometer has both °F and °C scales, with markings every 2° from -8° to 130°F.
- Pre-adjusted in temperature-controlled environment.
- Wt. 3 lbs. 3 oz. (1446 g).

191200 Martinique Thermometer

## Barometer/Thermometer

- Fully adjustable, temperature compensated aneroid barometer movement with inch and millibar scales.
- Calibrated for altitudes to 3,500' above sea level.
- Movements for altitudes from 3,500' to 7,000' are available by special order for an additional charge.
- Thermometer has both °F and °C scales, with markings every 2° from 32° to 122°F.
- Wt. 3 lbs. 3 oz. (1446 g).

191000 Martinique Barometer/Thermometer

## Single Mahogany Finish Base with Back Panel 100B

- Dims: 4" x 9-1/2" x 7-1/2" (102 x 241 x 191 mm).
- Wt. 2 lbs. (907 g).

## Single Mahogany Finish Base 101B

- Dims: 4" x 9-1/2" (102 x 241 mm).
- Wt. 1 lb. 5 oz. (596 g).

## Double Mahogany Finish Base 102B

- Dims: 4" x 18" (102 x 457 mm).
- Wt. 2 lbs. 13 oz. (1276 g).

## Mahogany Finish Book End 135

- Dims: 4" x 8-3/4" (102 x 222 mm).
- Wt. 1 lb. 14 oz. (850 g).
- Sold individually.




### Smaller traditional forged brass instruments.

- Created from solid, forged brass that is hand polished and flawlessly lacquered.
- Screw bezel adds classic nautical look and allows easy access to components for adjustment.
- Provided with complete instructions and mounting hardware.
- All instruments carry a limited lifetime warranty.

## ORION™ COLLECTION

Dial: 3-1/4" (83 mm). Base: 4-3/4" (121 mm).

Depth: 2-5/8" (67 mm).

500100   
500500



400100   
400500



151 (see below)



105B (see below)

400700



500700



### Quartz Ship's Bell Clock

- Traditional ship's 8-bell cycle, ringing every half hour.
- Bell silencer switch.
- AA battery included.
- Wt. 1 lb. 10 oz. (737 g).

400100 Orion Quartz Ship's Bell Clock

500100 Orion Ship's Wheel Quartz Ship's Bell Clock

### Barometer

- Fully adjustable, temperature compensated aneroid movement with inch and millibar scales.
- Calibrated for altitudes to 3,500' above sea level. Movements for altitudes from 3,500' to 7,000' are available by special order for an additional charge.
- Wt. 1 lb. 7 oz. (652 g).

400700 Orion Barometer

500700 Orion Ship's Wheel Barometer

### Quartz Clock

- Precision German movement.
- AA battery included.
- Wt. 1 lb. 5 oz. (596 g).

400500 Orion Quartz Clock

500500 Orion Ship's Wheel Quartz Clock

### Ship's Wheel Mahogany

#### Finish Base

- Dims: 4" x 9-1/2" (102 x 241 mm).
- Wt. 1 lb. 6 oz. (624 g).

105B

### Single Mahogany Finish Base

151

- Dims: 4" x 9-1/2" (102 x 241 mm).
- Wt. 1 lb. 2 oz. (510 g).

## Photo-Luminescent Dial — Glows In The Dark

### Photo-Luminescent

#### Quartz Ship's Bell Clock

- Black dial with superior nighttime photo-luminescent visibility.
- Traditional ship's 8-bell cycle, ringing every half hour.
- Bell silencer switch.
- AA battery included.
- Wt. 1 lb. 10 oz. (737 g).

400120 Photo-Luminescent Orion Quartz Ship's Bell Clock

### Photo-Luminescent Barometer

- Black dial with superior nighttime photo-luminescent visibility.
- Fully adjustable, temperature compensated aneroid movement with inch and millibar scales.
- Calibrated for altitudes to 3,500' above sea level. Movements for altitudes from 3,500' to 7,000' are available by special order for an additional charge.
- Wt. 1 lb. 7 oz. (652 g).

400720 Photo-Luminescent Orion Barometer





## ADMIRAL™ COLLECTION

Dial: 6" (152 mm). Base: 7-1/2" (191 mm).

Depth: 2-5/8" (67 mm).

*Forged brass instruments with slim profile and large dial.*

- Forged brass, polished and lacquered.
- Provided with complete instructions and mounting hardware.
- Lifetime warranty.

### Quartz Clock

- Precision movement.
- AA battery included.
- Wt. 4 lb. (1814 g).

290500

### Barometer

- Fully adjustable aneroid movement with inch and millibar scales.
- Calibrated for altitudes to 1,500' above sea level.
- Wt. 4 lb. 5 oz. (1956 g).

290700

## CUTTER™ COLLECTION

Dial: 3-1/8" (79 mm). Base: 4-5/8" (117 mm).

Depth: 1-3/8" (35 mm).

*Smaller forged brass porthole style instruments.*

- Forged brass, front-opening hinged bezel case allows easy access to the movement.
- Provided with complete instructions and mounting hardware.
- Lifetime warranty.

### Quartz Clock

- Precision movement.
- AA battery included.
- Wt. 1 lb. 10 oz. (737 g).

210500

### Barometer

- Fully adjustable aneroid movement with inch and millibar scales.
- Calibrated for altitudes to 3,500' above sea level.
- Wt. 1 lb. 10 oz. (737 g).

210700



## NAUTILUS™ COLLECTION

Dial: 3-3/4" (95 mm). Base: 5-7/8" (149 mm).

Depth: 2-1/2" (64 mm).

*Waterproof, rugged anodized aluminum instruments.*

- Functions extremely well in the punishing saltwater environment.
- Low glare, satin black case constructed of solid aluminum that is color anodized and sealed so that the finish will not peel, bubble or tarnish.
- Glass crystal sits in a double O-ring seat for vibration, impact and thermal expansion protection.
- Anodized aluminum dial is laser engraved.
- Durable moveable markers are made of U.V. stabilized polycarbonate and located outside the crystal for marking time or pressure.
- All fasteners are stainless steel.
- Clock and barometer are available with or without incorporated fluid dampened inclinometer.
- To calibrate movement in either clock or barometer, twist case 1/8 turn to remove case and leave back plate on bulkhead. Also convenient for storage or anti-theft reasons.
- Provided with complete instructions and mounting hardware.
- Lifetime warranty.

### Quartz Clock

### Quartz Clock with inclinometer

- Precision quartz movement; accurate to +/- 15 seconds a month.
- Waterproof to a depth of 100 feet.
- Precision movement.
- AA battery included.
- Wt: 1.1 lbs. (499 g).

160515

162215

### High Sensitivity Barometer

### High Sensitivity Barometer with Inclinometer

- Hydrophobic filter allows air to pass yet resists water.
- Waterproof to a depth of 3 feet for 30 minutes.
- Includes patented "high sensitiv" all metal aneroid movement with expanded scale so that needle noticeably moves as weather conditions change.
- Scale ranges from 28.5" to 31.5" instead of traditional 27.5" to 31.5" Hg. Can be read in millibars.
- Wt: 1.1 lbs. (499 g).

161815

163015



## BLUEWATER™ COLLECTION

Dial: 3-3/4" (95 mm). Base: 5-1/2" (140 mm).

Depth: 2-7/8" (73 mm).

### *Inexpensive, weatherproof plastic instruments.*

- Splash resistant, corrosion proof precision molded high impact black styrene case requires little maintenance.
- Glare resistant matte finish bezel.
- Scratch resistant glass crystal.
- Hinged bezel with knurled brass locking lug makes movement and battery easily accessible.
- Splash resistant "O" ring seal.
- Secure battery clip for open ocean security.
- Provided with complete instructions and mounting hardware.
- Lifetime warranty.

#### Quartz Clock

150500

- Precision movement.
- AA battery included.
- Wt. 10 oz. (283 g).

#### Quartz Time & Tide Clock

150300

- Combination quartz and tide clock movement which averages the lunar tide cycle.
- Tide sector is calibrated for the east coast of the United States. (Note: The clock will work for other tidal bodies of water but will need to be re-set more frequently).
- AA battery included.
- Wt. 11 oz. (312 g).



#### Barometer

150700

- Fully adjustable, temperature compensated aneroid movement with inch and millibar scales.
- Calibrated for altitudes to 1,500' above sea level.
- Wt. 10 oz. (283 g).

#### Thermometer

151200

- Dial-type thermometer has both °F and °C scales, with markings every 2° from -10° to 130°F.
- Pre-adjusted in temperature-controlled environment.
- Wt. 12.5 oz. (354 g).

## NIGHT WATCH™ COLLECTION

Dial: 3-1/2" (89 mm). Base: 4-1/2" (114 mm).  
Depth: 1-1/4" (32 mm).

### *Glow-in-the-dark black aluminum instruments.*

- Photo-luminescent dials combined with corrosion resistant black epoxy coated aluminum cases.
- Provided with complete instructions and mounting hardware.
- Lifetime warranty.

#### Quartz Clock

240513

- Precision movement.
- N battery included.
- 12 and 24 hour dial.
- Wt. 5.2 oz. (147 g).

#### Barometer/Thermometer/Hygrometer

241413

- Fully adjustable aneroid barometer movement with inch and millibar scales.
- Calibrated for altitudes to 1,500' above sea level.
- Thermometer and hygrometer are pre-adjusted in a temperature-controlled environment.
- Wt. 5.6 oz. (159 g).

#### Tide Clock

240413

- Second hand indicates clock is running.
- Tide indicator hand which is calibrated to the Atlantic lunar tide cycle. (Note: The clock will work for other tidal bodies of water but will need to be re-set more frequently).
- AA battery included.
- Wt. 5.2 oz. (147 g).

### *PHOTO-LUMINESCENT DIALS!*



## EASTPORT™ COLLECTION

Dial: 4-3/4" (121 mm). Base: 5-7/8" (149 mm).

Depth: 1-1/2" (38 mm).

### *Black anodized aluminum instruments.*

- Constructed of corrosion resistant aluminum coated with long lasting rugged black epoxy finish.
- Provided with complete instructions and mounting hardware.
- Lifetime warranty.

#### Quartz Clock

110500

- Precision movement.
- N battery included.
- 12 and 24 hour dial.
- Wt. 9.6 oz. (272 g).

#### Barometer/Thermometer/Hygrometer

111400

- Fully adjustable aneroid barometer movement with inch and millibar scales.
- Calibrated for altitudes to 1,500' above sea level.
- Thermometer and hygrometer are pre-adjusted in a temperature-controlled environment.
- Wt. 10.2 oz. (289 g).

#### Tide Clock

110400

- Second hand indicates clock is running.
- Tide indicator hand is calibrated to the Atlantic lunar tide cycle. (Note: The clock will work for other tidal bodies of water but will need to be re-set more frequently).
- AA battery included.
- Wt. 9.6 oz. (272 g).

## WESTPORT™ COLLECTION

Dial: 4-3/4" (121 mm). Base: 5-7/8" (149 mm).

Depth: 1-1/2" (38 mm).

*Affordable stamped brass, slim profile instruments.*

- Constructed of polished brass, finished with a protective lacquer coating.
- Provided with complete instructions and mounting hardware.
- Lifetime warranty.



### Quartz Clock

460500

- Precision movement.
- N battery included.
- 12 and 24 hour dial.
- Wt. 12 oz. (340 g).

### High Sensitivity Barometer

461800

- Double capsule expanded scale barometer.
- Scale range from 28.5" to 30.5" instead of the traditional scale of 27.5" to 31.5" in Hg.
- Numbered certificate of accuracy included.
- Calibrated for altitudes to 1,500' above sea level.
- Wt. 14 oz. (397 g).

### Barometer/Thermometer/Hygrometer

461400

- Fully adjustable aneroid barometer movement with inch and millibar scales.
- Calibrated for altitudes to 1,500' above sea level.
- Thermometer and hygrometer are pre-adjusted in a temperature-controlled environment.
- Wt. 10.2 oz. (289 g).

### Tide Clock

460400

- Second hand indicates clock is running.
- Tide indicator hand is calibrated to the Atlantic lunar tide cycle. (Note: The clock will work for other tidal bodies of water but will need to be re-set more frequently.)
- AA battery included.
- Wt. 12 oz. (340 g).

### Mahogany Finish Base

106B

- For all Eastport™ and Westport™ Series and World Time clock.
- Dims: 7-1/2" x 6-3/4" x 2-3/4" (191 x 171 x 70 mm).
- Wt. 1 lb. 5 oz. (596 g).
- Brass plate not included, contact us for availability.



## CATALINA™ COLLECTION

Dial: 2-3/8" (60 mm). Base: 3-1/2" (89 mm).

Depth: 1-3/4" (44 mm).

*Smallest traditional forged brass instruments.*

- Precision German movements.
- Solid forged brass cases with lacquered finish.
- Screw bezel for easy access.
- Provided with complete instructions and mounting hardware.
- Lifetime warranty.

### Quartz Clock

300500

- Precision German movement.
- N battery included.
- Wt. 13 oz. (369 g).

### Barometer

300700

- Fully adjustable aneroid movement with inch and millibar scales.
- Calibrated for altitudes to 3,500' above sea level.
- Wt. 13 oz. (369 g).



### Mahogany Finish Wood Base

108B

- Dims: 6-3/4" x 2-1/8" x 5-1/8" (171 x 54 x 130 mm).
- Wt. 9 oz. (255 g).



## TRIDENT™ COLLECTION

Dial: 3" (76 mm). Base: 4-1/4" (108 mm). Depth: 1-1/4" (32 mm).

*Smallest inexpensive solid brass instruments.*

- Polished brass, lacquered case.
- Provided with complete instructions and mounting hardware.
- Lifetime warranty.

### Quartz Clock

6010500

- Precision German movement.
- AA battery included.
- Wt. 7 oz. (199 g).

### Barometer

6010700

- Fully adjustable aneroid movement with inch and millibar scales.
- Calibrated for altitudes to 3,500' above sea level.
- Wt. 6 oz. (170 g).



## VICTORY COLLECTION

Dial: 6-1/2" (165 mm).

Base: 6-3/8" (162 mm).

Depth: 3-1/4" (83 mm).

### Our loudest bell clock.

- Hammer strikes external bell.
- Double strikes for each hour (i.e., two double-strikes at 2 o'clock).
- Forged brass bell and clock.
- Quartz movement.
- D battery included.
- Limited lifetime warranty.

### Bell Clock & Wood Plaque

821500

- Mounted on solid North American hardwood plaque with mahogany finish.
- Mounts to wall or bulkhead.
- Dims: 18-1/4"x9"x1" (464x299x25 mm).
- Wt: 7.5 lbs. (3189 g).

### Bell Clock & Wood Base

823500

- Mounted on solid North American hardwood base with mahogany finish to sit on shelf or desk.
- Dims: 10-1/2"x4-1/2"x4-1/4" (267x114x108mm).
- Wt: 7.25 lbs. (3182 g).



## PLAQUES

*Beautiful wood plaques enhance the display of all instruments.*

- Vertical or horizontal mounting.
- Lacquered mahogany finish.
- Instruments sold separately.

### Large Plaque AW-400

- For two instruments with bases to 7-1/2" (191 mm) in diameter.
- Dims: 22-3/4" x 10-1/2" (578 x 267 mm).
- Wt. 4 lbs. 10 oz. (2098 g).

### Round Plaque 502

- For one instrument with base to 5-3/4" (146 mm) in diameter.
- Dims: 7" (178 mm) diameter.
- Wt. 13 oz. (369 g).

### Citation Plaque AW-307

- For two instruments with bases to 6-1/2" (165 mm) in diameter.
- Dims: 11" x 18" (279 x 457 mm).
- Wt. 2 lbs. 15 oz. (1333 g).
- USNA insignia not included.



### Mahogany Finish Base

106B

- For all Eastport™ and Westport™ Series and World Time clock.
- Dims: 7-1/2" x 6-3/4" x 2-3/4" (191 x 171 x 70 mm).
- Wt. 1 lb. 5 oz. (596 g).
- Brass plate not included, contact us for availability.



## CUTTER™ PLAQUE

Dial: 3-1/8" (79 mm).

Plaque: 5-1/2" (140 mm) x 12-1/4" (311 mm).

- Porthole front-opening style bezel mounted on a solid wood mahogany finish presentation plaque.
- Provided with complete instructions and mounting hardware.
- Lifetime warranty.

### Cutter Plaque 210800

- Precision quartz clock movement.
- AA battery included.
- Fully adjustable aneroid barometer movement with inch and millibar scales.
- Calibrated for altitudes to 3,500' above sea level.
- Wt. 3 lbs. 2 oz. (1417 g).





## PORTHOLE™ COLLECTION

**Dial: 6-1/8" (156 mm). Base: 9-7/8" (251 mm). Depth: 3" (76 mm).**

- Hand polished and lacquered solid brass porthole with mahogany finished frame.
- Movement is easily accessible from rear of case.
- Provided with complete instructions, mounting hardware and AA battery.
- Lifetime warranty.

### Radio Control Clock

**312000**

- To set up, insert battery, select time zone with clearly marked knob and hang on wall. Clock will automatically set itself to exact time.
- Wt. 3 lbs. 15 oz. (1786 g).



### Clock/Thermometer/Hygrometer

**313100**

- This three-in-one instrument features a clock with second hand, as well as a hygrometer and thermometer.
- Precision movement.
- Thermometer reads in Fahrenheit and Celsius.
- Hygrometer shows percentage of humidity in the air.
- Wt. 3 lb. 15 oz. (1786 g).



## TRIDENT® TIME & TIDE

**Dial: 10-1/4" (260 mm).**

**Base: 10-1/2" (267 mm).**

**Depth: 2-3/4" (70 mm).**

### Time & Tide Clock 440315

- Combination quartz and tide clock movement.
- Black dial with easy to read bold white lettering.
- Housed in a black case with acrylic crystal.
- Tide indicator hand is calibrated to the Atlantic lunar tide cycle. (Note: The clock will work for other tidal bodies of water but will need to be re-set more frequently).
- Provided with complete instructions, mounting hardware and AA battery.
- Lifetime warranty.
- Wt. 1 lb. 1 oz. (482 g).



## ORBIT GIMBAL ALARM COLLECTION



- Lacquered brass.
- Quartz movement with alarm functions.
- Pivots for best viewing angle.
- Felt bottom.
- Lifetime warranty.
- AA battery included.

### Small Orbit Alarm Clock 840600

- Dims: 4-3/4" H x 3-1/2" W (121 x 89 mm).
- Dial: 2-3/8" (60 mm).
- Wt: 1 lb. 3 oz. (539 g).

### Large Orbit Alarm Clock 850600

- Dims: 5-1/4" H x 6-1/4" W (133 x 159 mm).
- Dial: 3" (76 mm).
- Wt: 2 lbs. 5.3 oz. (1057 g).

## HOMEPORT™ COLLECTION

**Dial: 6-1/8" (156 mm).**

**Base: 8-13/16" (224 mm).**

**Depth: 1-7/8" (48 mm).**

- Polished brass, lacquered case.
- Provided with complete instructions and mounting hardware.
- Lifetime warranty.

### Quartz Clock

**550500**

- Precision movement.
- Battery included.
- Wt. 1 lb. 3 oz. (550 g).

### Barometer

**550700**

- Fully adjustable aneroid movement with inch and millibar scales.
- Calibrated for altitudes to 1,500' above sea level.
- Wt. 1 lb. 4 oz. (567 g).

## WEATHER STATION

**Dial: 2-1/2" (64 mm).**

**Plaque: 12-1/2" (318 mm) x 4-1/4" (108 mm).**

- Three brass instruments mounted on a solid mahogany plaque.
- Mounts vertically or horizontally.
- Wt. 1 lb. (454 g).
- Lifetime warranty.

### Weather Station

**721700**

- Easy-to-read instruments include quartz clock, barometer and comfortmeter (combination thermometer/hygrometer).
- AA battery included.







### **Solaris Desk Clock 790500**

- Polished brass and lacquered gimballed quartz clock swivels for any viewing angle and can be locked in place.
- Stands on three brass legs.
- Beveled glass crystal below clock can be etched for personalization.
- Brass plate for engraving included.
- N battery included.
- Dims: 4-5/8" x 5-1/4" x 5-1/4" (117 x 133 x 133 mm).
- Wt: 3 lbs. 11 oz. (1673 g).



### **Skipjack™ Clock & Barometer 300800**

- Combination clock/barometer swivels 360° horizontally and vertically in a brass gimbal. One side is the clock and the other side is the barometer.
- Gimbal allows for comfortable viewing from any angle.
- N battery included.
- Aneroid barometer calibrated for altitudes to 3,500' above sea level.
- Overall dims: 5-1/2" x 5" (140 x 127 mm).
- Base Diameter: 3-1/4" (83 mm).
- Dial 2-3/8" (60 mm).
- Base 5-1/2" x 3" (140 x 76 mm).
- Wt. 2 lbs. 6 oz. (1077 g).



### **Clipper™ Clock & Barometer 773300**

- Housed in a forged brass case that swivels horizontally and vertically in a brass gimbal base.
- Incorporates our finest clock and barometer movements.
- For adjustment purposes, clock and barometer may be easily accessed using screw bezel.
- AA battery included.
- Aneroid barometer calibrated for altitudes to 3,500' above sea level.
- Overall dims: 7-3/4" x 7" (197 x 178 mm).
- Base Diameter: 4-1/2" (114 mm).
- Dial 3-1/4" (83 mm).
- Base 7" x 3" (178 x 76 mm).
- Wt. 4 lbs. 2 oz. (1871 g).



### **World Time Clock 662114**

- Forged brass, hinged bezel case with beveled crystal mounted to solid wood base (#106B).
- Hands show time at your location in center of dial, while unique rotating sub-dial shows time at major cities throughout the world on outside perimeter.
- Precision movement.
- AA battery included.
- Dial: 4-1/2" (114 mm).
- Depth: 4-1/4" (108 mm).
- Clock w/base: 6-3/4" w x 7-3/4" h (171 x 197 mm).
- Wt. 3 lb. 10 oz. (1644 g).
- 106B base also available separately. See page 15.

### **Gimbal Box Clock 701100**

- German quartz movement mounted in solid wood mahogany finish box.
- Rests in traditional polished brass ship's chronometer gimbal with locking arm.
- Square box has polished brass fittings.
- Brass plate for personalization included.
- N battery included.
- Dial: 2-3/8" (60 mm).
- Box: 5-3/4" x 5-3/4" x 3-3/4" (146 x 146 x 95 mm).
- Wt. 3 lbs. 3 oz. (1446 g).





# PORTHOLE DESK COLLECTION

- High quality instruments set in solid North American hardwood.
- Brass finish porthole design will never tarnish.
- Four color gift box, battery and instructions included.
- Limited lifetime warranty.



**Nautical Tambour Clock** 410500

- Depth: 3" (76 mm). Width: 8" (203 mm). Height: 5" (127 mm). Dial: 2-1/2" (64 mm).
- AA battery included.
- Wt: 1 lb. 8 oz. (680 g).



**Porthole Desk Set** 313300

- Depth: 5-1/4" (133 mm). Width: 10-1/4" (260 mm). Height: 2" (51 mm). Dial: 1-1/2" (38 mm).
- N battery included.
- Wt: 1 lb. 14 oz. (821 g).



Freestanding or wall mounted with hardware included

**Porthole Weather Center** 312800

- Horizontal configuration.
- Hardware included.
- Depth: 12-1/2" (318 mm). Width: 14-1/4" (362 mm). Height: 6" (152 mm). Dial: 2-1/2" (64 mm).
- N battery included.
- Wt: 2 lbs. 14 oz. (1270 g).

**Trysail Weather Center (not shown)** 313200

- Same as above, but vertical configuration.



**Porthole Desk Clock** 312400

- Depth: 2-3/4" (70 mm). Width: 1-1/2" (38 mm). Height: 6-1/2" (165 mm). Dial: 2-1/2" (64 mm).
- AA battery included.
- Wt: 1 lb. 2 oz. (503 g).



Can be personalized.

**Octagon Box Alarm Clock** 750600

- Solid brass quartz alarm clock.
- Includes engravable brass plate for interior lid.
- Optional engravable brass plate for front of box (as shown above).
- Mahogany finish hardwood.
- Depth: 3-1/2" (89 mm). Width: 6-5/8" (168 mm). Height: 3-7/8" (98 mm).
- AA battery included.
- Wt: 2 lbs. 2 oz. (953 g).





### Antigua™ Set

**140800**

- Forged brass quartz clock and barometer set mounted on a solid wood mahogany finish base.
- Brass plate for personalization included.
- AA battery included.
- Overall size with instruments: 20-3/4" x 3-1/8" x 7" (527 x 79 x 178 mm).
- Instrument size: Dial: 3-3/4" (95 mm). Base: 5" (127 mm). Depth: 3" (76 mm).
- Base: 21" x 2-1/2" x 4-1/4" (533 x 64 x 108 mm).
- Wt: 9 lbs. 8 oz. (4309 g).
- Lifetime warranty.

### Commodore's™ Set

**260800**

- Polished brass quartz clock and barometer set mounted on a solid wood mahogany finish base.
- Brass plate for personalization included.
- N battery included.
- Overall Size w/instruments: 13-1/2" x 1-3/4" x 5" (343 x 44 x 127 mm).
- Instrument Size: Dial: 2-3/8" (60 mm). Base: 3-1/2" (89 mm). Depth: 1-3/4" (44 mm).
- Base Size: 13-1/2" x 1-3/4" x 3-1/4" (343 x 44 x 83 mm).
- Wt: 3 lbs. 12 oz. (6237 g).
- Lifetime warranty.



### Dampened Deluxe Quartz Barograph

**410-D**

- Eight diaphragm bellows provide maximum sensitivity and precision.
- Hinged mahogany case with glass sides provides easy access to chart drum.
- Quartz movement requires no winding and is more accurate than key-wound movements.
- Barograph readings are marked with a felt tip pen which lasts 6 to 9 months.
- Furnished with a one-year supply of weekly charts, one felt tip pen and dampening fluid.
- AA battery included.
- German made.
- Case dims: 11" x 6-3/4" x 6-1/2" (279 x 171 x 165 mm).
- Chart size: 3-5/8" (92 mm).
- Chart range: 28.5 to 31".
- Chart duration: 7 days.
- Wt. 7 lbs. (3175 g).

#### Accessories:

- 108** Replacement Inch Charts (3-1/16" x 12" [78 x 305 mm])  
**107** Replacement Millibar Charts (3-1/16" x 12" [78 x 305 mm])  
**451** Replacement Felt Tip Pen Cartridge

### Classic Barograph

**410-C**

- Housed in a mahogany case with glass sides and a polished brass handle for easy access.
- Quartz movement requires no winding and is more accurate than key-wound movements.
- Barograph readings are marked with a felt tip pen that lasts 6 to 9 months.
- Furnished with a one-year supply of weekly charts and one felt tip pen.
- AA battery included.
- Case dims: 7-3/4" x 5" x 5-1/4" (197 x 127 x 133 mm).
- Chart size: 3-5/8" (92 mm).
- Chart range: 28.5 to 31".
- Chart duration: 7 days.
- Wt. 3 lbs. (1361 g).

#### Accessories:

- 120CH** Replacement Millibar Charts (2-1/16" x 9-1/4" [52 x 235 mm])  
**121** Replacement Inch Charts (2-1/16" x 9-1/4" [52 x 235 mm])  
**451** Replacement Felt Tip Pen Cartridge



# CHART WEIGHTS

- Forged brass ring.
- Presentation gift box.
- Felt bottom protects surface and prevents sliding.
- Customized engraving available.
- Diameter: 3" (76 mm).
- Wt: .75 lbs. (340 g).



## Clock

- Quartz clock movement.
- LR44 battery included.
- Limited lifetime warranty.

### Available Finishes:

- 610500 — Brass Clock Chart Weight
- 610500PS Brass Clock Chart Weight & Pen Set
- 610500N Nickel Clock Chart Weight
- 610500NPS Nickel Clock Chart Weight & Pen Set

## Compass

- Liquid filled compass.

### Available Finishes:

- 661 Brass Compass Chart Weight
- 661PS Brass Compass Chart Weight & Pen Set
- 661N Nickel Compass Chart Weight
- 661NPS Nickel Compass Chart Weight & Pen Set

## Thermometer

- Working thermometer with both Celsius and Fahrenheit scales.

### Available Finishes:

- 412T Brass Thermometer Chart Weight
- 412TPS Brass Thermometer Chart Weight & Pen Set
- 412TN Nickel Thermometer Chart Weight
- 412TNPS Nickel Thermometer Chart Weight & Pen Set

## Magnifier

- 5 X magnifying lens.

### Available Finishes:

- 412M Brass Magnifier Chart Weight
- 412MPS Brass Magnifier Chart Weight & Pen Set
- 412MN Nickel Magnifier Chart Weight
- 412MNPS Nickel Magnifier Chart Weight & Pen Set







# BRASS & NICKEL BELLS

- Cast brass or nickel plated brass.
- Includes bulkhead or wall mount bracket.
- Lanyard included (white for brass bells, navy blue for nickel bells).
- 8.5", 12" and 18" bells meet the US Coast Guard requirement for larger commercial vessels.

## Available Sizes and Finishes:

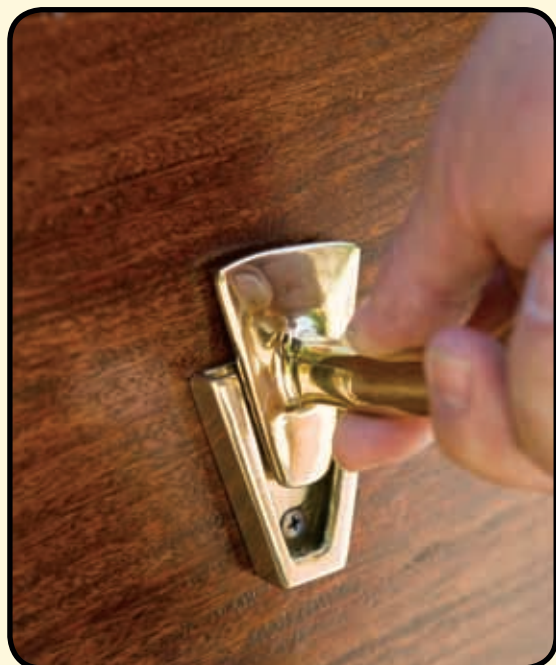
4040	4" (102 mm) Brass Bell; 1.1 lb (500 g)
4040N	4" (102 mm) Nickel Bell; 1.1 lb (500 g)
5050	5" (127 mm) Brass Bell; 1.76 lb (800 g)
5050N	5" (127 mm) Nickel Bell; 1.76 lb (800 g)
6060	6" (152 mm) Brass Bell; 2.65 lbs (1,200 g)
6060N	6" (152 mm) Nickel Bell; 2.65 lbs (1,200 g)
7070	7" (178 mm) Brass Bell; 4.3 lbs (1,950 g)
7070N	7" (178 mm) Nickel Bell; 4.3 lbs (1,950 g)
8585	8.5" (216 mm) Brass Bell; 7.28 lbs (3,300 g)
8585N	8.5" (216 mm) Nickel Bell; 7.28 lbs (3,300 g)
1212	12" (305 mm) Brass Bell; 18.74 lbs (8,500 g)
1212N	12" (305 mm) Nickel Bell; 18.74 lbs (8,500 g)
1800	18" (457 mm) Brass Bell; 70.55 lbs (32,000 g)



6060/EN4006

- 6" bell mounted on 9" x 12" (229 x 305 mm) high gloss mahogany plaque with brass plate.
- 6060/EN4006 shown (please inquire about additional size options).
- Wt: 4 lbs. 4.5 oz. (1956 g).

- All bells come with simple slide and lock mounting hardware.
- Extra mounting hardware available separately. Please inquire.







## Stormglass Weather Forecaster ES 55 01 01 (brass)

ES 55 01 04 (polished stainless)

ES 55 01 05 (matte stainless)

- This mysterious weather predictor has been used since 1750. Admiral Fitzroy, the famous sailor and meteorologist, used the Stormglass aboard the HMS Beagle during his historic voyage with Darwin. After 250 years, how the Stormglass works is still a mystery, but it is believed that it has to do with the electromagnetic changes caused by weather and sun storms. The appearance of the crystals inside the glass indicates changes in the weather.
- Sealed glass chamber holds the crystals and is encapsulated in a beautifully crafted brass cylinder.
- Displayed freestanding or mounted to a boat bulkhead or wall using an optional mounting bracket.
- Available in three finishes; polished brass, polished stainless and matte stainless.
- Diameter: 1-5/8" (41 mm). Height: 5-3/4" (146 mm).
- Wt: 1 lb. (454 g).

### Accessories:

ES 55 02 01 Brass Hook

ES 55 02 04 Polished Stainless Hook

ES 55 02 05 Matte Stainless Hook

Stormglass Plate Brass plate engraved with the Stormglass details (6" (152 mm) square)

Stormglass Display Brass plate and hook mounted on wood plaque (*shown*) (Stormglass not included) (10" x 8" x 2-1/2" [254 x 203 x 64 mm])



## Galileo Glass ES 55 06 01 (lacquered brass)

ES 55 06 04 (polished stainless)

ES 55 06 05 (matte stainless)

- Liquid volume expansion thermometer.
- Sealed glass chamber holds 4 glass balls and is encapsulated in brass cylinder.
- Available in three finishes; polished brass, polished stainless and matte stainless.
- Optional mounting hook.
- Diameter: 1-5/8" (41 mm). Height: 5-3/4" (146 mm).
- Wt: 1 lb. (454 g).

### Accessories:

ES 55 02 01 Brass Hook

ES 55 02 04 Polished Stainless Hook

ES 55 02 05 Matte Stainless Hook





### Yacht Vase

**601 (small)  
701 (large)**

- Attractive way to have flowers on board without the risk of them tipping over.
- Available in two sizes.
- Fits into yacht lamp gimbals, #705 and #605 (sold separately).
- Vase sways securely while underway.
- Also stands independently on a table or countertop.
- Brass is lacquered so that it will not tarnish.
- Dims: #701: 7-1/8" x 3" (181 x 76 mm). #601: 7-1/8" x 2-1/2" (181 x 64 mm).
- Wt. #701: 1 lb. 2 oz. (411 g). #601: 14.5 oz. (964 g).

#### Accessories:

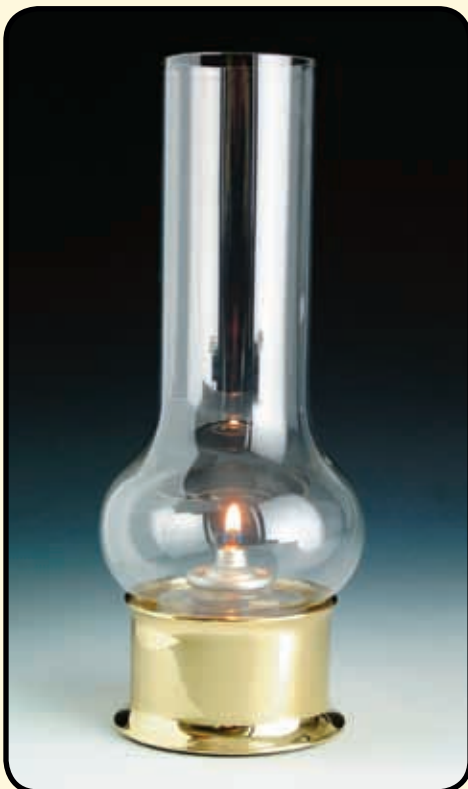
- 605** Optional Solid Brass Gimbal for Mini Yacht Vase (*shown*)  
**705** Optional Brass Gimbal for Yacht Vase



### Sure Shine - The Perfect Polish

**63825**

- Formulated for the marine industry.
- One step application cleans, polishes and protects with a coating designed to last 3 to 6 months.
- Contains no harsh acids, caustics or abrasives, so is safe on all metals. Use on: brass, bronze, copper, stainless steel, aluminum, pewter, nickel, even sterling silver or silver plate.
- Cleans and deoxidizes fiberglass.
- Removes cloudiness from plexiglass, clear vinyl, eisenglass or lexan.
- 8 oz. (227 g) reclosable plastic tube.



### Lamp Fuel

- Exclusive blend of highly refined liquid waxes formulated to standards far above other lamp oils.
- Odorless and smokeless when used as directed. The cleanest burning lamp fuel available.
- Eliminates sooty build-up commonly associated with kerosene fuel.
- Very safe, with a flash point over 200°F (93.3°C).
- Not considered a hazardous material by most shipping agents.
- Wt. quart, 1 lb. 11 oz. (0.946 liters)  
fuel cell, 2.4 oz (.071 liters).

#### Available Sizes:

- 780** Lamp Fuel (quart)  
**HD17** Disposable Fuel Cell (single)  
**HD17-6** Disposable Fuel Cell (6-pack)

### Companion Lamp

**818**

- Crafted of solid cast brass, polished and lacquered.
- Uses unique, hassle free, disposable fuel cell.
- Has non-skid base with holes for permanent mounting on table surface, if desired.
- One fuel cell with 17-hour burn time included with unit.
- Dims: 3-1/2" x 8-3/4" (89 x 222 mm).
- Wt. 13.9 oz. (394 g).

#### Accessories:

- HD17** Disposable Fuel Cell (single)  
**HD17-6** Disposable Fuel Cell (6-pack)  
**20210** Chimney





## Weems & Plath® LAMPS

### Yacht Lamp™ 700

#### Chrome Yacht Lamp 900

- Crafted of solid cast and tooled brass (#700).
- Crafted of chrome plated, solid cast and tooled brass (#900).
- Oil container capacity: 5 oz. (0.15 l).
- Burn time: +/- 30 hours with clean burning Weems & Plath® lamp fuel.
- Dims: 10" tall x 3-1/2" diameter (254 x 89 mm).
- Wt. 3 lbs. 4 oz. (1474 g).
- Optional Gimbal 1 lb. 6 oz. (624 g).

#### Optional Accessories:

- 705 Brass Gimbal for Yacht Lamp  
 751 Brass Wall Bracket  
 905 Chrome Gimbal for Chrome Yacht Lamp  
 951 Chrome Wall Bracket  
 791 Chimney  
 770-3 Wick

### Mini Yacht Lamp™ 600

#### Chrome Mini Yacht Lamp 400

- Crafted of solid cast and tooled brass (#600).
- Crafted of chrome plated solid cast and tooled brass (#400).
- Oil container capacity: 2 oz. (.06 l)
- Burn time: +/- 12 hours with clean burning Weems & Plath® lamp fuel.
- Dims: 7" tall x 2-1/2" diameter (178 x 64 mm).
- Wt. 1 lb. 10 oz. (737 g).
- Optional Gimbal 14 oz. (397 g).

#### Optional Accessories:

- 605 Brass Gimbal for Mini Yacht Lamp  
 751 Brass Wall Bracket  
 405 Chrome Gimbal for Chrome Mini Yacht Lamp  
 951 Chrome Wall Bracket  
 792 Chimney  
 770-3 Wick

### Atlantic Lamp w/Smoke Bell 718

#### Chrome Atlantic Lamp 918

- Constructed of solid brass (#718).
- Constructed of chrome plated brass (#918).
- 4-way gimbal and smoke bell included.
- Oil container capacity: 6 oz. (.18 l)
- Burn time: +/- 21 hours with clean burning Weems & Plath® lamp fuel.
- Dims: 10" tall x 5" (with gimbal) (254 x 127 mm).
- Wt. 2 lbs. 5 oz. (1049 g).

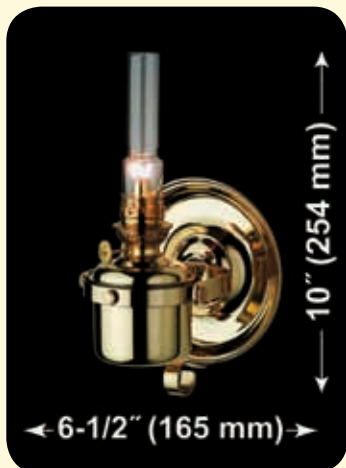
#### Accessories:

- 790 Chimney  
 770-3 Wick



*Den Haan Rotterdam, founded in Rotterdam, Holland, in 1922, began as a manufacturer of navigation and interior lighting for inland and seagoing vessels. All lamps, many of them replicas of old models, are handmade to commercial ship standards.*

- Solid brass with a polished and lacquered finish.
- To see more DHR products, please go to the Special Order Lamp Section of the Weems & Plath® website.



**Berth Lamp 8840/O**

- Solid brass, polished and lacquered.
- Perfect for moving from one location to another; can be easily carried, bulkhead mounted or simply placed on a horizontal surface.
- Oil container capacity: 11 oz. (.33l).
- Burn time: +/- 50 hours with clean burning Weems & Plath® lamp fuel.
- Wt. 3.6 lbs. (1531 g).

**Accessories:**

**60130 Chimney**

**00006W Wick**

**ES701100 Electric Conversion Kit**



**Side Light, Green 8311G/E**

- Solid brass, polished and lacquered.
- Available with red or green lens.
- Light Source: 110v electric, 40 watt max. Bulb included.
- Wt. 2.4 lbs. (1021 g).



**Bi-Color Light 8412/E**

- Solid brass, polished and lacquered.
- Light Source: 110v electric, 40 watt max. Bulb included.
- Wt. 2.4 lbs. (1021 g).



**Side Light, Red 8311R/E**

- Solid brass, polished and lacquered.
- Available with red or green lens.
- Light Source: 110v electric, 40 watt max. Bulb included.
- Wt. 2.4 lbs. (1021 g).



**Copper Wall Anchor Lamp 5613/E**

- Oxidized antique copper finish.
- Unique amber color individually blown glass lens.
- Light Source: 110v electric, 60 watt max. Bulb included.
- Wt. 7.9 lbs. (3431 g).



**Anchor Light 8611/O**

- Solid brass, polished and lacquered.
- 4" (102 mm) lens.
- Oil container capacity: 4.25 oz. (.13l).
- Burn time: +/- 40 hours with clean burning Weems & Plath® lamp fuel.
- Wt. 4 lbs. (1814 g).

**Accessories:**

**567 Chimney**

**00005W Wick**



**Anchor Light 8604/O (oil) 8604/E (electric)**

- Solid brass, polished and lacquered.
- Hoistable, provided with guide eyelets.
- 5" (127 mm) lens.
- Electric version: 110v, 40w max.
- Oil container capacity: 10 oz. (.3l).
- Burn time: +/- 40 hours with clean burning Weems & Plath® lamp fuel.
- Wt. 5 lbs. (2268 g).

**Accessories:**

**60130 Chimney**

**00006W Wick**

**ES-1 Electric Conversion Kit**



**Anchor Light 8603/O**

- Solid brass, polished and lacquered.
- Hoistable, provided with guide eyelets.
- Available in electric or oil models.
- 6" (152 mm) lens.
- Oil container capacity: 10 oz. (.3 l).
- Burn time: +/- 30 hours with clean burning Weems & Plath® lamp fuel.
- Wt. 7.2 lbs. (3232 g).

**Accessories:**

**567 Chimney**

**00005W Wick**

**ES-1 Electric Conversion Kit**





#### Mini Trawler Lamp 8211/O

- Solid brass, polished and lacquered.
- Inside of shade is white stove enameled.
- Oil container capacity: 10 oz. (.3 l).
- Burn time: +/- 30 hours with clean burning Weems & Plath® lamp fuel.
- Wt. 3.4 lbs. (1474 g).

##### Accessories:

20211 Chimney

20311 Wick

ES-2 Electric Conversion Kit



#### Trawler Lamp 8201/O (oil) 8201/E (electric)

- Solid brass, polished and lacquered.
- Available in oil or electric model.
- Inside of shade is white stove enameled.
- Electric 110v, 100w max.
- Oil container capacity: 34 oz. (1 l).
- Burn time: +/- 30 hours with clean burning Weems & Plath® lamp fuel.
- Wt. 4.8 lbs. (2041 g).

##### Accessories:

20210 Chimney

20312 Wick



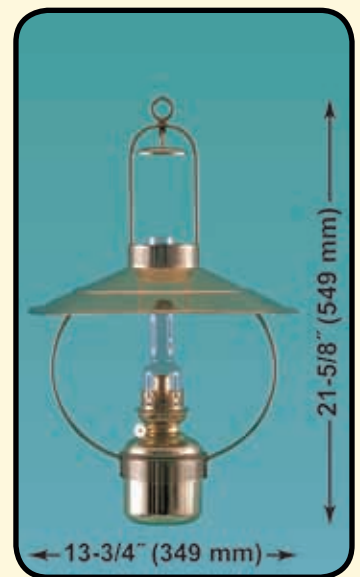
#### Clipper Lamp 8207/O

- Solid brass, polished and lacquered.
- Inside of shade is white stove enameled.
- Oil container capacity: 29 oz. (.86 l).
- Burn time: +/- 40 hours with clean burning Weems & Plath® lamp fuel.
- Wt. 3.1 lbs. (1389 g).

##### Accessories:

15210 Chimney

14234 Wick



#### Main Cabin Lamp 8209/O

- Solid brass hanging lamp, polished and lacquered.
- Inside of shade is white stove enameled.
- Oil container capacity: 27.2 oz. (.8 l).
- Burn time: +/- 60 hours with clean burning Weems & Plath® lamp fuel.
- Wt. 3.3 lbs. (1446 g).

##### Accessories:

14210 Chimney

14234 Wick



#### Gimbal Lamp with Smoke Bell 8917/O

- Solid brass, polished and lacquered.
- Heavy base.
- Mounting with gimbal bracket.
- Oil container capacity: 12 oz. (.35 l).
- Burn time: +/- 24 hours with clean burning Weems & Plath® lamp fuel.
- Wt. 3.4 lbs. (1474 g).

##### Accessories:

00135C Chimney

00111W Wick



#### Cargo Lamp 8803/O

- Solid brass, polished and lacquered.
- Oil container capacity: 8.5 oz. (.25 l).
- Burn time: +/- 25 hours with clean burning Weems & Plath® lamp fuel.
- Wt. 6 lbs. (2722 g).

##### Accessories:

10170 Chimney

20311 Wick

ES-1 Electric Conversion Kit



#### Wall Lamp 8807/O

- Solid brass, polished and lacquered.
- Oil container capacity: 18.5 oz. (.55 l).
- Burn time: +/- 40 hours with clean burning Weems & Plath® lamp fuel.
- Wt. 1.3 lbs. (539 g).

##### Accessories:

14210 Chimney

14234 Wick



#### Pantry Lamp 8877/O

- Solid brass, polished and lacquered.
- Mounting bracket features black stove enameled coating.
- Oil container capacity: 8.5 oz. (.25 l).
- Burn time: +/- 20 hours with clean burning Weems & Plath® lamp fuel.
- Wt. 1.3 lbs. (539 g).

##### Accessories:

14170 Chimney

14234 Wick

*E.S.Sørensen, a Danish company, produces a fine collection of high-quality, handmade oil lamps designed and made using models and tools dating back to the end of the 19th century.*

- Solid brass, hand lacquered, requires no polishing.
- Numbered individually.
- Weems & Plath® is the exclusive U.S. distributor for E.S.Sørensen lamps.
- To see more E.S.Sørensen products, please go to the Special Order Lamp Section of the Weems & Plath® website.

#### Passenger Lamp ES 50 01 01

- Hand polished and lacquered brass.
- 0.24" (6mm) circular burner.
- Oil Container Capacity: 4 oz. (.12 l).
- Burn Time: +/- 9 hours with clean burning Weems & Plath® lamp fuel.
- Height 13.39" (340 mm).
- Wt. 3 lbs. 2 oz. (1417 g).

##### Accessories:

ES 10 00 01 Chimney

00006W Wick

ES-1 Electric Conversion Kit



#### Ship's Lamp ES 50 02 01

- Rests in a four-way gimbal.
- Extra weighted base to keep it steady in the roughest of seas.
- Hand polished and lacquered brass.
- 0.24" (6mm) circular burner.
- Oil Container Capacity: 4 oz. (.12 l).
- Burn Time: +/- 9 hours with clean burning Weems & Plath® lamp fuel.
- Height 13-3/4" (350 mm).
- Wt. 3 lbs. 2 oz. (1417 g).

##### Accessories:

ES 10 00 01 Chimney

00006W Wick

ES-1 Electric Conversion Kit

#### Captain's Cabin Lamp

ES 50 03 03

ES 50 03 04

- Four-way gimbal.
- 5" handmade acid-frosted globe (127 mm) with compass or ship motif which is securely fastened with a clip-on spring in stainless steel.
- Hand polished and lacquered brass.
- 0.24" (6mm) circular burner.
- Oil Container Capacity: 4 oz. (.12 l).
- Burn Time: +/- 9 hours with clean burning Weems & Plath® lamp fuel.
- Height 15.35" (390 mm).
- Wt. 4 lbs. 8 oz. (2041 g).

##### Accessories:

ES 10 19 00 Chimney

00006W Wick

ES-1 Electric Conversion Kit



#### Adjustable

Smoke Bell ES 10 05 00

- Hand polished and lacquered brass.
- Distance from center of bell to wall can be adjusted from 2" to 5-3/4" (51 to 145 mm).
- Diameter of bell: 3.46" (88mm).
- Wt. 12 oz. (340 g).

#### Clip-on Brass Smoke

Bell ES 10 06 00 (small)

ES 10 06 01 (large)

- Polished brass.
- Small bell diameter: 1-3/4" (44mm).
- Large Bell diameter: 2-1/2" (62mm).
- Wt: Sm. 3 oz. (85 g).
- Lg. Wt. 4 oz. (113 g).





**Classic Yacht Lamp**  
**ES 50 10 03 (Compass)**  
**ES 50 10 04 (Ship)**

- Four-way gimbal.
- 5" handmade acid-frosted globe (127 mm) that is securely fastened with a clip-on spring in stainless steel.
- Hand polished and lacquered brass.
- 0.24" (6mm) circular burner.
- Oil Container Capacity: 11 oz. (.33 l).
- Burn Time: +/- 23 hours with clean burning Weems & Plath® lamp fuel.
- Height: 14.17" (360 mm).
- Wt. 5 lbs. 5 oz. (2410 g).

**Accessories:**

**ES 10 19 00 Chimney**  
**00006W Wick**  
**ES-1 Electric Conversion Kit**

**Old Danish Table**  
**Lamp/Vesta ES 50 11 09**

- Danish style turn of the century (1800 to 1900) design.
- 6" (152 mm) opalescent, hand-blown cased VESTA glass shade.
- Hand polished and lacquered brass.
- 0.39" (10mm) circular burner.
- Oil Container Capacity: 22 oz. (.65 l).
- Burn Time: +/- 34 hours with clean burning Weems & Plath® lamp fuel.
- Height: 12-1/4" (310 mm).
- Wt. 5 lbs. 8 oz. (2495 g).

**Accessories:**

**ES 10 20 00 Chimney**  
**20311 Wick**  
**ES-2 Electric Conversion Kit**



*Weems & Plath® is a distributor for Foresti & Suardi, a fine Italian line of nautical brass lamps and accessories since 1961. Weems & Plath® stocks the following three lamps in the United States, but to see more Foresti & Suardi products, please go to the Special Order Lamp Section of the Weems & Plath® website.*



**Gimbal Electric Lamp 2026**

- Modeled after the traditional oil lamps of the same style.
- Ample light using a 100w bulb.
- Light source: 110v electric, 100watt max.
- Dims: 17-3/8" tall x 6-1/4" deep. (441 x 159 mm).
- Wt. 2 lbs. 3 oz. (992 g).

**Accessory:**

**2026-C Chimney**



**Round Brass Bulkhead Light**  
**2408**

- Frosted glass dome with a starburst pattern in the center to diffuse light evenly.
- Can be bulkhead or overhead mounted.
- Light source: 12v electric, 20 watt max.
- Dims: 7-1/2" Dia. x 2-1/8" depth. (191 x 54 mm).
- Wt. 1 lb. 12 oz. (794 g).



**Oval Brass Bulkhead Light**  
**2035B**

- Frosted glass lens protected by a brass framework.
- Can also be overhead mounted.
- Light source: 110v electric, 60 watt max.
- Dims: 5-3/8" w x 7-5/8" l x 4-3/8" d. (137 x 194 x 111 mm).
- Wt. 5 lbs. 12 oz. (2608 g).



## LOG BOOKS

- Attractive, embossed cover made of heavy, flexible waterproof material.
- Spiral bindings allow pages to open flat for ease in recording information.
- Every log contains over 80 pages for recording critical information, in addition to handy quick reference pages covering various topics.
- All logs are designed to fit inside our teak and leather covers for a more impressive presentation.
- Dims: 11-1/2" x 8-5/8" (292 x 219 mm).
- Wt: 0.94 lb. (426 g).

### The Ship's Log™ 797

- Flexible, diary type format consisting of lined pages for recording ship's data and activities.
- Included are guest register, vessel specifications and serial number list pages, as well as quick reference pages on topics including: rules of the road, weather reference, radio procedures and more.
- ISBN 1 878797 08 5.

### The Cruising Log™ 798

- Provides space for recording information about excursions, as well as a guest registry.
- Includes quick reference pages on such topics as: rules of the road, radio procedures, distress signals and weather reference.
- Includes space to record vital vessel information.
- ISBN 1 878797 06 9.

### The Guest Log™ 799

- Contains plenty of room for recording visitors aboard, as well as cruising information.
- Includes reference pages covering such topics as: equipment checklist, rules of the road and more.
- Pages for recording important vessel information also provided.
- ISBN 1 878797 07 7.

### GPS Navigation Log™ 800

- Backup GPS data in an organized format. Pages include: waypoint index, passage records and worksheets for dead reckoning.
- Contains quick reference index with float plan and 406 MHz EPIRB registration forms and more.
- ISBN 1 878797 14 X.

### The Sportfishing Log™ 803

- Designed for recording pertinent information about each fishing excursion.
- Pages include: anglers trip logs for recording sea conditions, activity, destinations, Loran coordinates, water temperature, hot spots and catch records.
- Additional pages are provided for recording vessel specifications and common courses, as well as quick reference pages on topics such as: flag use, radio procedures, rules of the road and more.
- ISBN 1 878797 09 3.

### The Maintenance Log™ 804

- Includes ample space to list vessel specifications, spare part numbers, repairs and maintenance, as well as space for reference drawings.
- Also includes quick reference pages on safety, weather, BIA certification requirements and more.
- ISBN 1 878797 10 7.



## Teak Log Covers

- Attractive, handmade teak covers with high gloss lacquer finish.
- Both practical and decorative.
- Fits all Weems & Plath Log Books (sold separately).
- All covers feature solid brass engravable plate.
- Marlin, Sailboat and Powerboat plates have ample room for engraving the vessel name, captain and hailing port.
- Dims: 13" x 10" (330 x 254 mm).
- Wt: 2.87 lbs. (1,302 g).

### Available Styles:

- 297 Teak Log Cover, Blank Plate
- 298 Teak Log Cover, Marlin Plate
- 299 Teak Log Cover, Sailboat Plate
- 300 Teak Log Cover, Powerboat Plate



## Leather Log Cover 301

- Handsome alternative to Teak Log Cover.
- Fits all Weems & Plath® log books (sold separately).
- Brass plate that fits on the cover is reversible. On one side it says, "Ship's Log"; other side is blank, suitable for personalized engraving.
- Features brass corners to protect leather, plus a leather loop that conveniently holds a pen (included).
- Dims: 12-3/8" x 10" (314 x 254 mm).
- Wt: 1.25 lbs. (567 g).

### Accessories:

- 302 Spare Black/Gold Pen
- 303 Pen Refill



# WATERPROOF BINOCULARS

BN1A2



## 7x50 Navy One Binocular

BN1A2

- Fits optional Sentinel Binocular Case.
- Checkered design provides slip-proof grip.
- Black rubber armored.
- Hermetically sealed and nitrogen purged for true waterproof and fog proof performance.
- Exclusive SPARC (Stimulated Penetration Anti-Reflection Coatings) optics eliminate internal glare and ghost images resulting in nearly 95% light transmission at night or in low light.
- Lightweight aluminum body passed military specification drop/shock test from 6' and withstands a vibration test equal to 20 gravities of force.
- Five year factory warranty against defects, fogging or leakage.
- Focusing System: Individual eyepiece focusing.
- Dims: 8" x 7-3/4" x 3-3/8" (203 x 197 x 86 mm).
- Wt: 2.41 lbs. (1,093 g).

BN29



*Reticle scale as seen through left lens.*

## 7x28 Apache Binoculars

BN29

- Built to same tough standards as U.S. Army M24 binoculars.
- Optional reticle (left view side) allows for easy range or distance estimation.
- Hermetically sealed and nitrogen purged for true waterproof and fog proof performance.
- Exclusive SPARC (Stimulated Penetration Anti-Reflection Coatings) optics eliminate internal glare and ghost images resulting in nearly 95% light transmission at night or in low light.
- Anti-corrosive, lightweight aluminum body will pass military specification drop/shock test from 6' and withstand a vibration test equal to 20 gravities of force.
- Five year factory warranty against defects, fogging or leakage.
- Focusing System: Individual eyepiece focusing.
- Dims: 5-3/4" 5-1/4" x 2" (146 x 133 x 51 mm).
- Weight: 0.90 lbs. (408 g).

## 7x50 Center Focus Binoculars

637

- Fits optional Sentinel Binocular Case.
- Center focus mechanism allows for quick, easy adjustment to different focal ranges.
- Includes deluxe neck strap, objective & ocular lens covers and padded nylon carrying case.
- 5 year warranty.
- Dims: 7-1/2" x 8-1/4" x 2-3/4" (191 x 210 x 70 mm).
- Wt: 2.125 lbs. (964 g).

637



## 7x50 IF Binoculars w/Compass

647C

- Fits optional Sentinel Binocular Case.
- Includes batteries for compass light, deluxe neck strap, objective & ocular lens covers and padded nylon carrying case.
- 5 year warranty.
- Illuminated compass.
- Focusing system: Individual eyepiece focusing.
- Dims: 8" x 8-1/2" x 2-3/4" (203 x 216 x 70 mm).
- Weight: 2.56 lbs. (1161 g).

647C



*Reticle scale as seen through left lens.*

## Sentinel Binocular Case

657

- Rugged aluminum binocular storage case.
- Housed in black gift box.
- Foam cut-out for binoculars.
- Soft yellow carrying case also included.
- Fits all models of Weems & Plath 7x50 binoculars including Navy One.
- Dims: 11-1/2" x 9-3/4" x 4" (292 x 248 x 102 mm).
- Wt: 2.45 lbs. (1111 g).



657



### LightWedge

**NV100**

- Elegant, simple design. Thin and lightweight, easy to handle and pack.
- Night vision-friendly red LED illumination. No bulbs to burn out.
- 40 hours of light on four AAA batteries (included).
- Distortion-free, optical-grade acrylic lens reflects red LED edge light onto page or chart, not into eyes.
- One-touch operation. Illuminates charts, maps and books with ease.
- Two brightness levels.
- Dims: 9-1/4" x 6-3/4" x 1/2" (235 x 172 x 13 mm).
- Wt: 0.53 lb. (241 g) with batteries.



### Chart Light

**31200**

- Concentrates light exactly where needed.
- Red slide-on lens for night vision (included).
- High intensity tungsten halogen bulb—5 times brighter than conventional filament bulb.
- Convenient dimming control built into base.
- Permanent or "Quick Disconnect" mounting methods.
- 12" flexible gooseneck for versatility.
- 12 Volt DC operation.
- .38 amp consumption maximum.
- Dims: 3" x 1-1/16" (76 x 27 mm).
- Wt: 1 lb. (454 g).

#### Accessories:

- 31211 Additional Snap Mounts
- 31215 Replacement Halogen Bulb
- 31216 Replacement Red Lens
- 31217 Optional AC Power Transformer



### Commercial Grade Chartlite

**S1400-12 (12 Volt)**

**S1400-24 (24 Volt)**

- Most durable and versatile chart utility light available.
- Dimmer control.
- Focus control - "flood" to "spot".
- Momentary switch for maximum brightness.
- Red or white light lever control.
- Fully adjustable in both vertical and horizontal planes.
- Unsnares from base for handheld use.
- 5' retractable coiled cord.
- Can be mounted vertically, horizontally or inverted.
- Lightweight, corrosion resistant die-cast aluminum alloy.
- 12v draws .33A; 24v draws .17A.
- Dims: 1-3/4" Diameter x 3-1/2" (45 x 89 mm).
- Wt: 0.85 lb. (386 g).

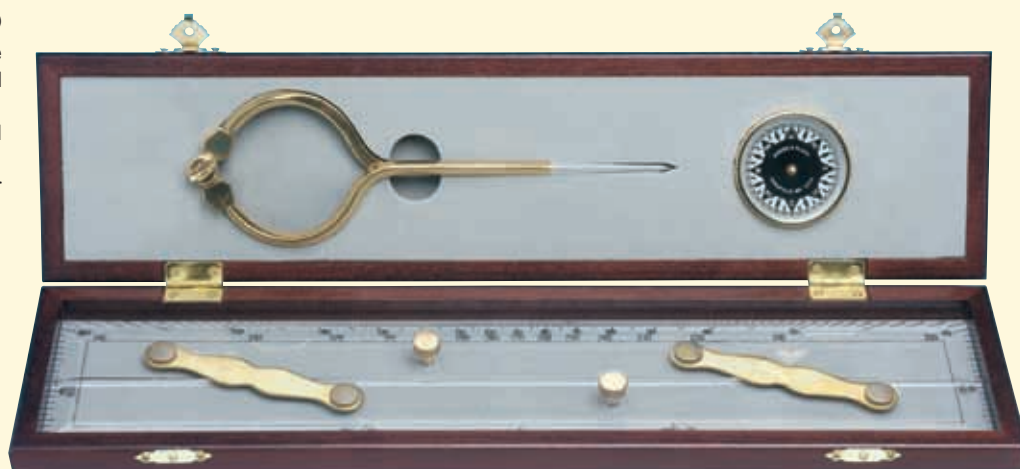
#### Accessories:

- S1400-7 Additional base for S1400 models
- 1816 Replacement Bulb for 12 volt Chartlite
- 313 Replacement Bulb for 24 volt Chartlite



## Elegant Navigation Set 319

- Includes: one #171-8" brass One-Hand Divider, one #142-15" Brass Arm Parallel Ruler, and a 1-3/4" liquid filled brass compass.
- Varnished mahogany-finish wooden box with polished brass hardware.
- Brass plate suitable for engraving is available for exterior (not included).
- Dims: 15-3/4" x 3-3/4" x 7/8" (400 x 95 x 22 mm).
- Wt: 1.44 lbs. (653 g).



## The Ship's Log for Kids with Safety Whistle 806

- Colorful and educational.
- Nautical journal pages for children to write impressions of their sea voyages while they learn valuable lessons about the sea and boating.
- Author is Sandra Travis Bildahl.
- ISBN 1 878797 15 8.
- Wt: 0.94 lb. (426 g).



## Tamaya Spica Sextant MS 733

- Proven quality through many years of use by ocean-going navigators.
- Optical system designed to ensure maximum performance with full 57mm index mirror.
- Interchangeable telescope available in 4x40mm or 7x35mm (optional).
- Rubber eye protector.
- Full illumination of both arc and drum.
- Carrying Case: molded plastic with two slide locks.
- Can be stored in fitted case with either scope mounted.

### Specifications:

- Measuring Range: -5° to 125°.
- Accuracy: +/- 10 seconds.
- Telescopes: 4x40mm: angle of view 7°, relative brightness 100. 7x35mm: angle of view 6.5°, relative brightness 25. All optics are fully coated.
- Frame: Lightweight die cast aluminum alloy with corrosion resistant black finish. Bronze arc.
- Vernier Scale: reads to 0.2'.
- Index Mirror: 57x42mm. Aluminized on rear side.
- Horizon Mirror: 57mm diameter.
- Shades:
  - 1) 4 for index mirror.
  - 2) 3 for horizon mirror.
  - 3) One special shade glass and one Polaroid glass for eyepiece of telescope.
- Wt: 4 lbs. (1815 g).



## Tamaya Jupiter Sextant MS 833

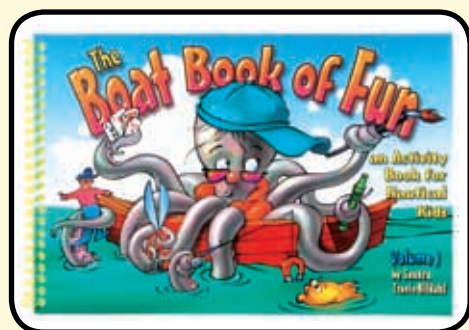
- Tamaya's full sized "best value" sextant.
- Shares many features of more expensive sextants.
- Mirrors are large; a 57x42mm index and a 57mm diameter horizon.
- Inclined handle provides natural and comfortable grip.
- Full illumination of both arc and drum.
- Carrying Case: molded plastic with two slide locks.
- Interchangeable telescope available in 4x40mm or 7x35mm (optional).

### Specifications:

- Measuring Range: -5° to 125°.
- Accuracy: +/- 12 seconds.
- Telescopes: 4x40mm: angle of view 7°, relative brightness 100. 7x35mm: angle of view 6.5°, relative brightness 25. All optics are fully coated.
- Frame: Lightweight die cast aluminum alloy with corrosion resistant black finish. Bronze arc.
- Vernier Scale: reads to 0.2'.
- Index Mirror: 57x42mm. Aluminized on rear side.
- Horizon Mirror: 57mm diameter.
- Shades:
  - 1) 4 for index mirror.
  - 2) 3 for horizon mirror.
- Carrying Case: Molded plastic with two slide locks.
- Wt: 3.75 lbs. (1701 g).

### Scopes for Tamaya Sextants:

- 330 4x40 Scope
- 331 7x35 Monocular
- 70 005 3.5x40 Scope, also fits C. Plath sextants



## The Boat Book of Fun 808

- Full of fun, imaginative activities for families that spend time on boats.
- Includes games, puzzles, projects and quizzes that can be played on the boat or anywhere.
- Activities include: Making Your Own Compass, Aluminum Sculptures, Lobster Quiz and Weather Scramble.
- Author is Sandra Travis Bildahl.
- ISBN 1 878797 16 6.
- Wt: 0.94 lb. (426 g).

*See our new Porthole Desk Collection on page 18*



*Showroom & Office:*

*214 Eastern Avenue*

*Annapolis, MD 21403-3318 USA*

*800-638-0428 • 410-263-6700 • fax 410-268-8713*

*[www.weems-plath.com](http://www.weems-plath.com) • [sales@weems-plath.com](mailto:sales@weems-plath.com)*

*Hours: Monday-Friday • 8:30 a.m. to 5 p.m. Eastern Time*